



16

FIELDSTONE SEAT WALL



12

GRANITE BLOCK CURB (VILLAGE CORE)



8

STONE PAVERS W/ GRASS JOINTS



4

POOL DECK



15

DRY-STACKED STONE WALL (ROUTE 22-ENTRY)



11

BRICK PAVING



7

TRAIL PAVING



3

STONE PAVING



14

WOOD WHEELSTOP



10

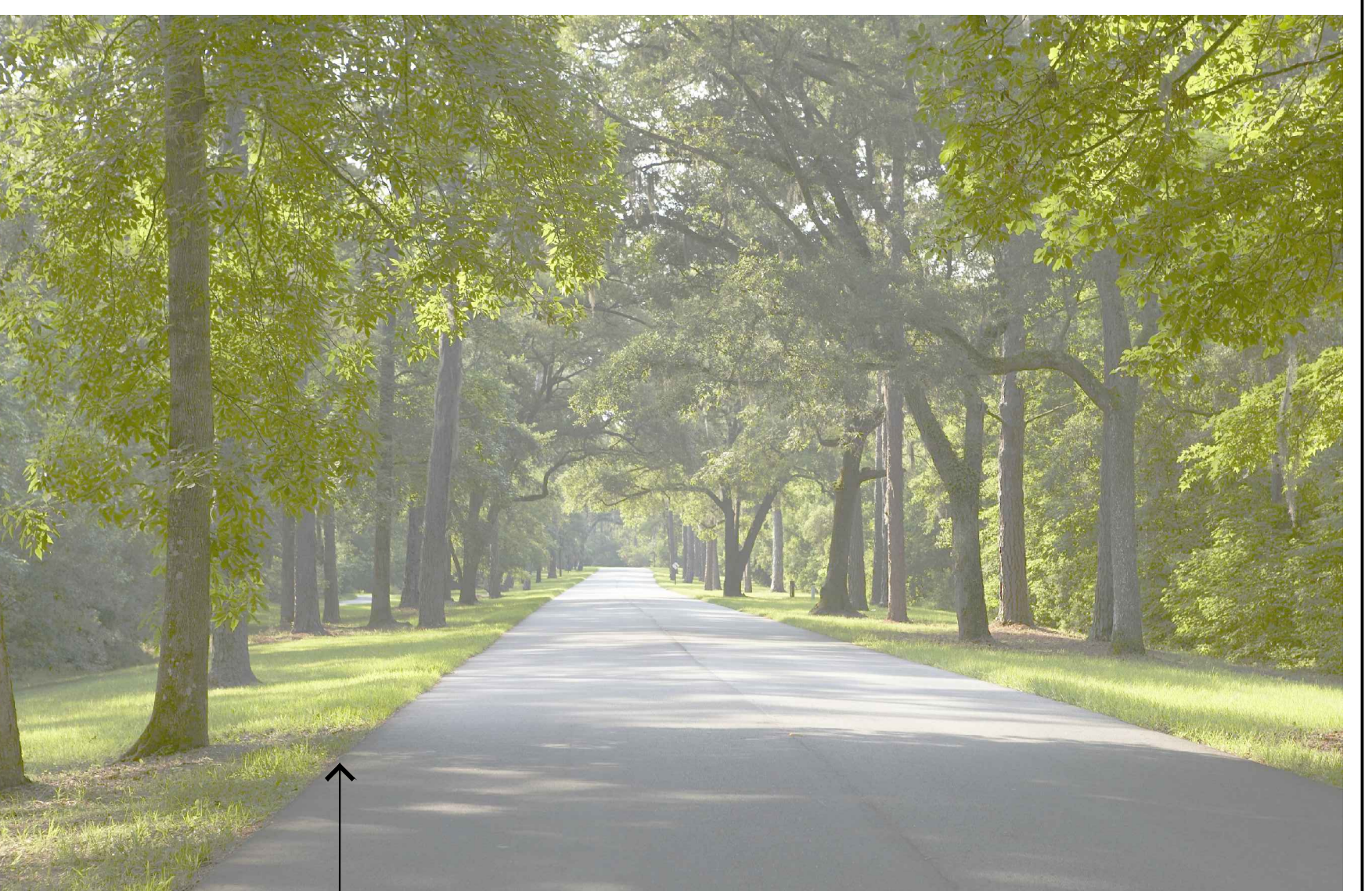
GRASSPAVE

SEE CIVIL DRAWINGS FOR GRASSPAVE SPEC, DETAIL, AND LOCATIONS.



6

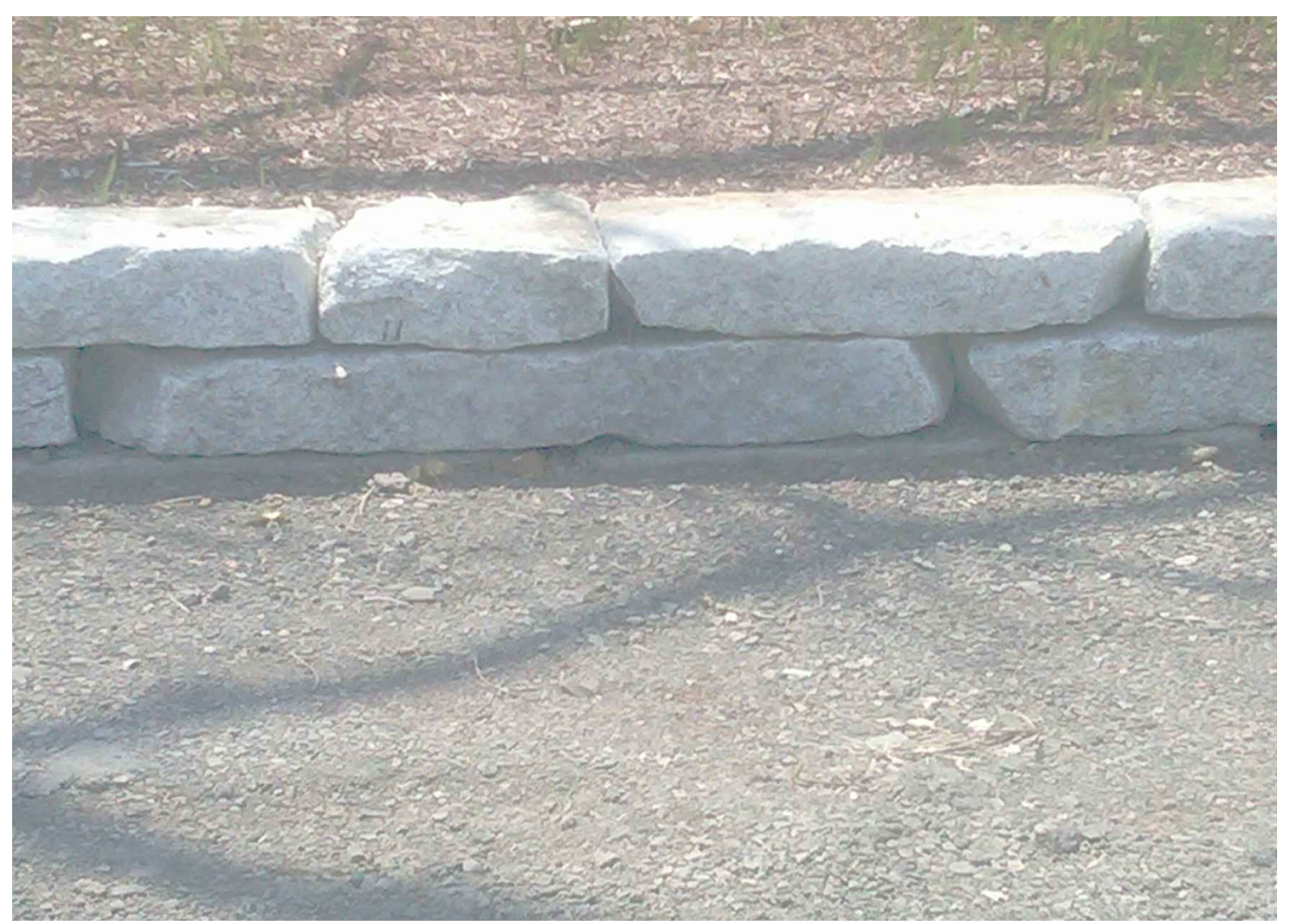
DECOMPOSED GRANITE PAVING



2

VEHICULAR PAVING

CONCEALED ASPHALT EDGE



13

STACKED STONE (ROAD TO ACTIVITY BARN)



9

CONCRETE PAVING



5

STONE WITH LAWN JOINTS AT CLUBHOUSE



1

ASPHALT PAVING (ALTERNATE: CHIPSEAL)

ALTERNATE: CHIPSEAL

ASPHALT

NOT FOR CONSTRUCTION
SILVER RIDGE
PHASE 1 SITE PLAN SUBMISSION
Amenia, New York
Dutchess County

HART HOWERTON
10 Erie Ave., Suite 200, Newburgh, NY 12550
TEL: 212.463.5431 FAX: 212.463.1748
Email: NY@hart-howerton.com

REVISIONS

NO.	DATE	ISSUE

DATE ISSUE
03/09/2014 PL 1 SITE PLAN
06/02/2014 SITE PLAN REV
07/19/2014 SITE PLAN REV
01/08/2015 SITE PLAN REV

PROJECT #: 12-507
DRAWN BY: JIN
CHECKED BY: SIB
DRAWING NO: L4.01



F-2

16 EQUESTRIAN FENCE (MAINTENANCE FACILITY)



S-1

12 TIMBER TRELLIS AND PAVILION (ACTIVITY BARN) SIM.



H-1

ST-3

8 TIMBER STEPS



BOULDER WALL @ LAWN TERRACE



BOULDER WALL @ STEPS

KB

4 BOULDER WALL



S-5

15 LAKE GARDEN STRUCTURE



F-6

11 WOODEN GUARDRAIL AT GOLF ACADEMY PATH



ST-4

7 CONCRETE STEPS



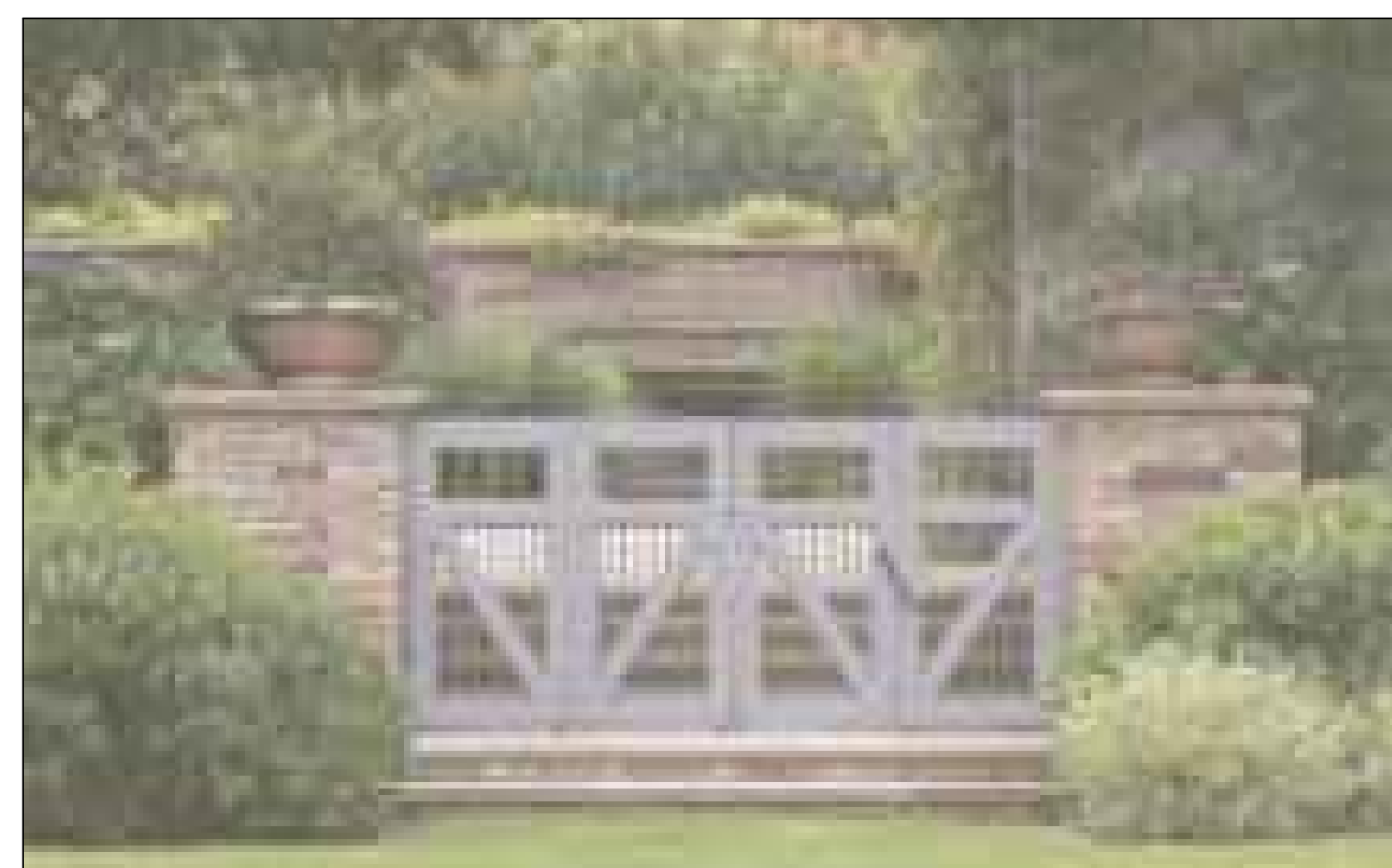
KB

3 PIERS AT VILLAGE CORE



F-5

14 TENNIS COURTS



F-1

POOL FENCE # GATE
POOL FENCE TO HAVE SIMILAR STYLING WHILE MEETING LOCAL POOL CODE. FENCE TO BE ALUMINUM, HIDDEN BY LAYERED PLANTING

10 POOL FENCE # GATE



STONE SLAB

ST-2

6 STONE SLAB STEPS



CONCRETE ALTERNATIVE



STONE WALL

KB

2 STONE RETAINING WALL



STUCCO WALL WITH STONE CAP



S-3

13 FIRE PIT



H-2

9 HANDRAIL 2



STONE PAVER

ST-1

5 STONE PAVER STEPS



CONCRETE ALTERNATIVE



KB

1 STONE SITE WALL

NOT FOR CONSTRUCTION
SILVER RIDGE
PHASE 1 SITE PLAN SUBMISSION
Armenia, New York
Dutchess County

HART HOWERTON
10 Erie Ave., Suite 200, Newburgh, NY 12550
Tel: 212.462.5431 Fax: 212.461.1748
Email: NY@hart-howerton.com

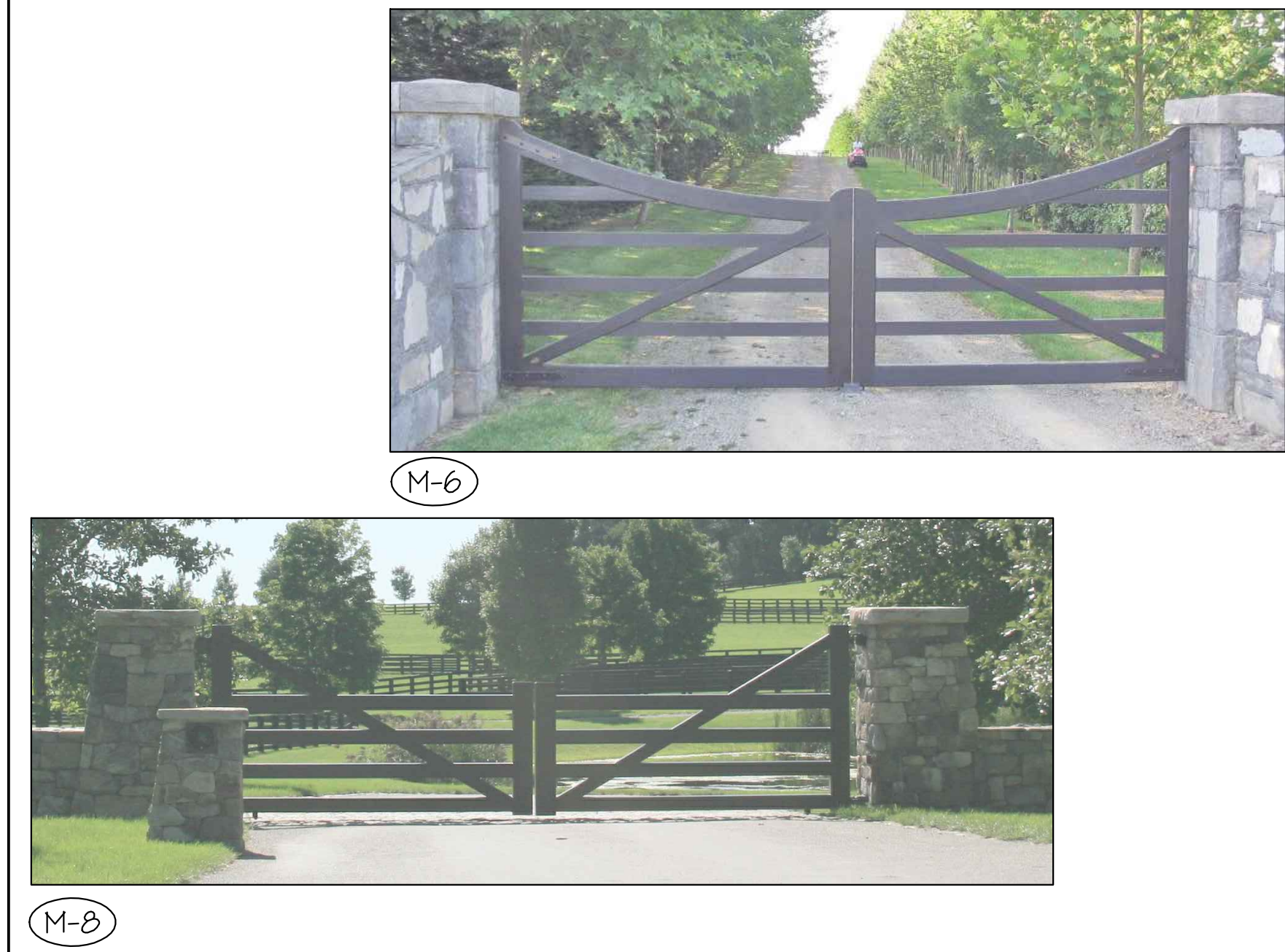
DATE ISSUE
03/09/2014 PL 1 SITE PLAN
02/12/2014 SITE PLAN REV
01/19/2014 SITE PLAN REV
01/08/2013 SITE PLAN REV

REVISIONS
NO. DATE ISSUE

SITE DETAILS

PROJECT #: 13-507
DRAWN BY: JIN
CHECKED BY: SIB
DRAWING NO.: L4.02

Jonathan Sotter, EIT 2012-12-207, Arden Inn and Cottages 610 CAD (Sheet) (Sheet 56) L4.02 Site Details.dwg, Page Setup, sec. 4.HH.cab, Plot Scale: 1:1, WITH PRINT/Canon R2230, 330x510 PCL&E



16 GATE



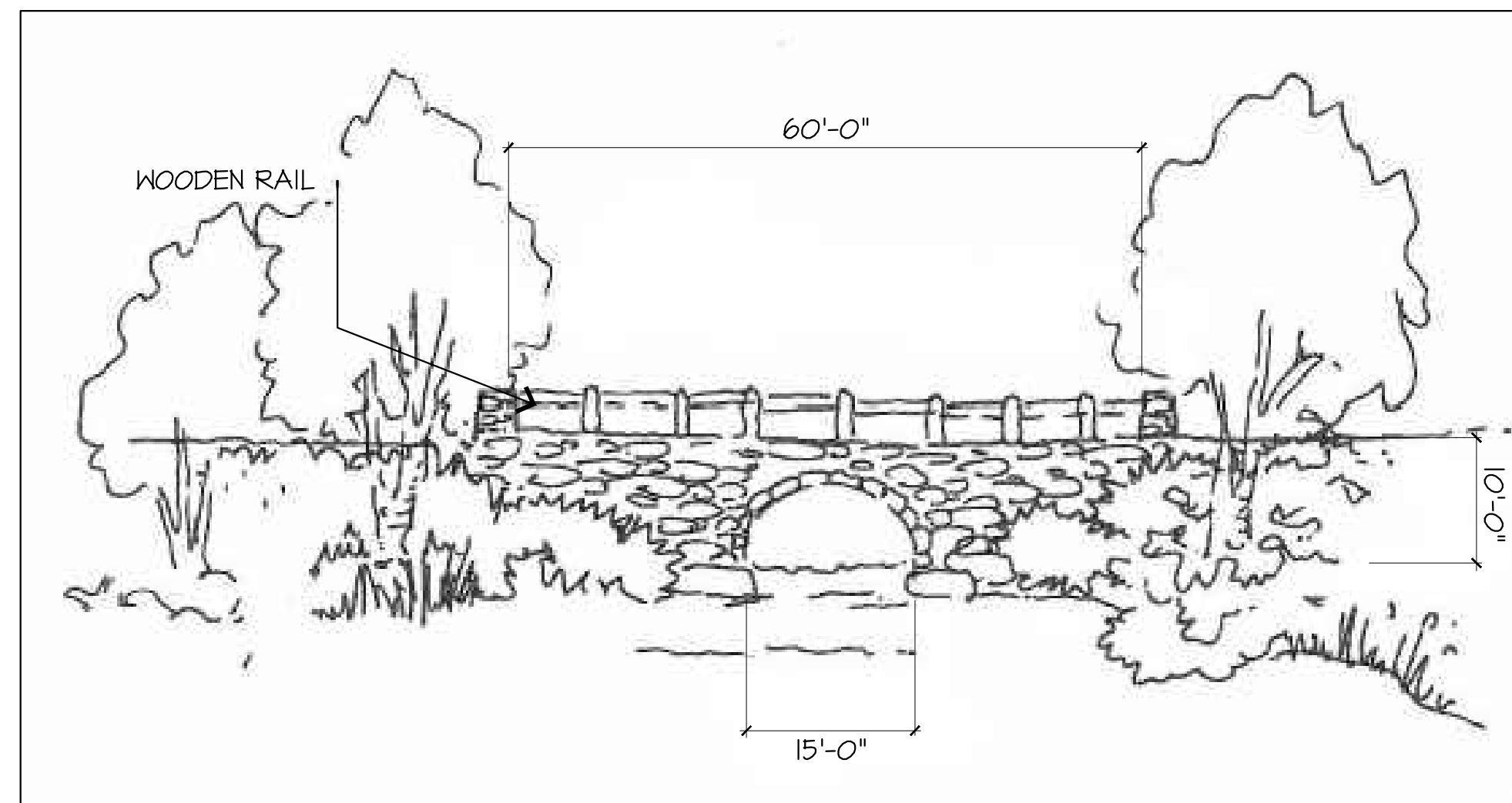
12 TRASH ENCLOSURES



8 INFORMAL BOULDER SEATING AT ARTISAN'S OVERLOOK



4 PAVILION (MAIN LAWN & GARDEN)



14 VEHICULAR BRIDGE (MAIN ENTRY)



7 GOLF BAG DROP



3 STONE PAVING AT ARTISAN'S PARK OVERLOOK



6 GATE AT ARTISAN'S OVERLOOK



1 TRELIS (LOWER CART ENTRY TO SERVICE YARD)



13 TIERED NATURAL WATER FEATURE



9 BARRIER ARM GATE



5 COLONNADES (MAIN LAWN & GARDEN)



NOT FOR CONSTRUCTION
 SILO RIDGE
 PHASE 1 SITE PLAN SUBMISSION
 Ardenia, New York
 Dutchess County

HART HOWERTON
 10 Erie Ave., Suite 200, Newburgh, NY 12550
 TEL: 212.462.5431 FAX: 212.462.1748
 Email: NY@hart-howerton.com

PROJECT #: 13-507
 DRAWN BY: JIN
 CHECKED BY: SIB
 DRAWING NO: L4.03

NO.	DATE	ISSUE

REVISIONS
 DATE ISSUE

DATE ISSUE
 03/09/2014 PL 1 SITE PLAN
 06/02/2014 SITE PLAN REV
 07/19/2014 SITE PLAN REV
 01/08/2015 SITE PLAN REV

Jonathan Sotter, EIT 2012-12-20P, Ardenia Inn and Cottages 610 CAD (Simplified) Sheet S61 L4.03 Site Details.dwg, Page Setup: asc, H11.dwg, Plot Scale: 1:1, WITH PRINTY Color: R223x133x115x125